



JE PUMP

Applications:

- Non-clogging type pump is used for pumping liquids which contains 35 mm metal chips.
- Filtration systems,
- Treatment systems,
- Cutting, turning, milling, boring, grinding and similar applications of the machine tools,
- Cooling systems,
- Circulation systems. JE Pumps are used for pumping of cutting / cooling fluids.

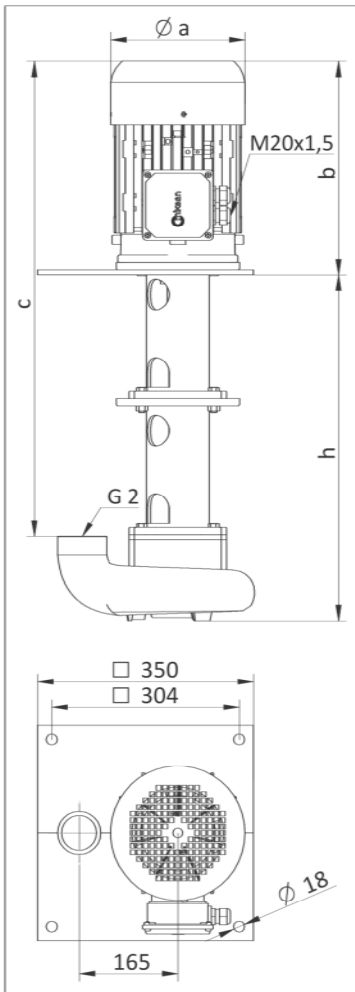
Fluid Specifications:

- Coolants,
- Cutting oils,
- Grinding oils,
- Dirty water and refining,
- Chip contains liquids (max. 30 mm)
- Fluid temperature 0...80 °C
- Kinematic viscosity 1...30 mm²/s (Please contact us for higher viscosities)

Materials:

Pump body	: Cast iron - DIN GG 25
Volute	: Cast iron - DIN GG 25
Impeller	: Cast iron - DIN GG 25
Pump shaft	: Engineering steel - AISI 1040 (DIN C35)
Electric motor	: 3 phase induction motor IE3 - 2 pole Protection degree IP 55

* Please contact us for different immersion depth.



DIMENSIONS & NOMINAL VALUES

TYPE	Depth of Immersion h (mm)	mm			Weight kg	Power kW	Voltage V(Δ/Y)	Frequency Hz	Rated current A	Speed rpm
		a	b	c						
JE 340/345	345	218	353	567	61	5.5	230/400	50	17.15/9.9	2900
JE 340/565	565			787	67.5					
JE 340/785	785			1007	74					
JE 420/345	345	258	438	635	84.5	7.5	400Δ	50	14.0	2930
JE 420/565	565			855	91					
JE 420/785	785			1075	97.5					

* The performance curves are based on 1 mm²/s (cSt) kinematic viscosity values and 997 kg/m³ density
 ** Curve tolerance according to ISO 9906:2012 Grade 3B.

Performance Curve

