



JC 420 PUMP

Applications:

- Cutting, turning, milling, boring, grinding and similar applications of the machine tools,
- Filtration systems,
- Treatment systems,
- Cooling systems,
- Circulation systems. JC Pumps are used for pumping of cutting / cooling fluids.

Fluid Specifications:

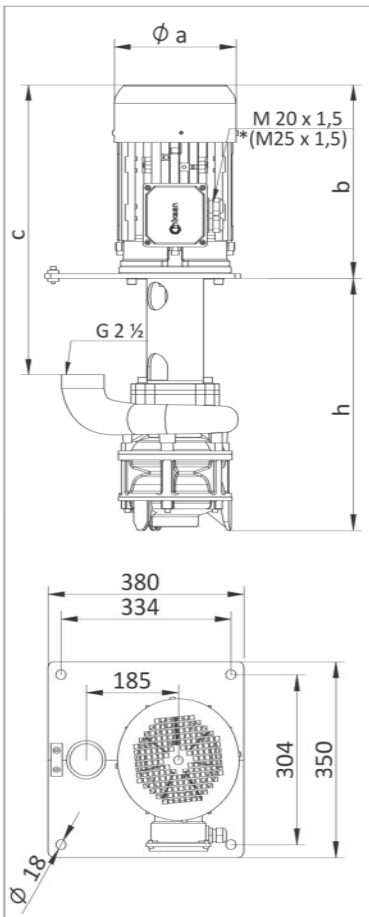
- Coolants,
- Cutting oils,
- Grinding oils,
- Water,
- Chip contains liquids (max. 15mm)
- Fluid temperature 0...80 °C
- Kinematic viscosity 1...90 mm²/s

Materials:

Pump body	: Cast iron - DIN GG 25
Volute	: Cast iron - DIN GG 25
Diffusor	: Cast iron - DIN GG 25
Suction Cover	: Cast iron - DIN GG 25
Impeller	: Cast iron - DIN GG 25
Pump shaft	: Engineering steel - AISI 1040 (DIN C35)
Electric motor	: 3 phase induction motor IE3 - 2 pole Protection degree IP 55

* JC 420 pumps can be optionally equipped with an axial impeller.

** Please contact us for different immersion depth.



DIMENSIONS & NOMINAL VALUES

TYPE	Depth of Immersion h (mm)	a	b	c	Weight kg	Power kW	Voltage V(Δ/Y)	Frequency Hz	Rated current A	Speed rpm
		mm								
JC 421/310	310	194	338	510	56.0	4.0	230/400	50	13.68/7.9	2900
JC 421/530	530			730	62.5					
JC 421/750	750			950	69					
JC 422/395	395	258	438	610	89.5	7.5	400Δ	50	14.0	2930
JC 422/615	615			830	96.0					
JC 423/480	480	258	438	610	106.5	11.0	400Δ	50	19.7	2930
JC 423/700	700			830	113.0					

* The performance curves are based on 1 mm²/s (cSt) kinematic viscosity values and 997 kg/m³ density
 ** Curve tolerance according to ISO 9906:2012 Grade 3B.

Performance Curve

