



JD PUMP

Applications:

- Vortex type pump is used for pumping liquids which contains 50 mm metal chips.
- Filtration systems,
- Treatment systems,
- Cutting, turning, milling, boring, grinding and similar applications of the machine tools,
- Cooling systems,
- Circulation systems. JD Pumps are used for pumping of cutting / cooling fluids.

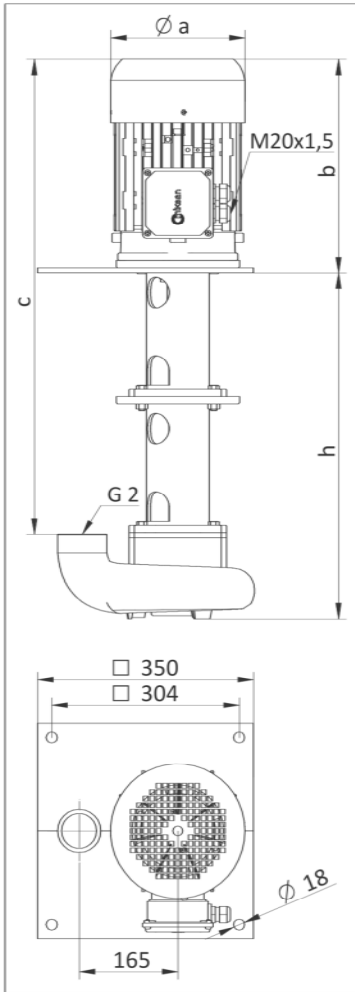
Fluid Specifications:

- Coolants,
- Cutting oils,
- Grinding oils,
- Water,
- Chip contains liquids (max. 50 mm)
- Fluid temperature 0...80 °C
- Kinematic viscosity 1...30 mm²/s (Please contact us for higher viscosities)

Materials:

Pump body	: Cast iron - DIN GG 25
Volute	: Cast iron - DIN GG 25
Impeller	: Cast iron - DIN GG 25
Pump shaft	: Engineering steel - AISI 1040 (DIN C35)
Electric motor	: 3 phase induction motor IE3 - 2 pole Optionally 4 pole, Protection degree IP 55

* Please contact us for different immersion depth.



DIMENSIONS & NOMINAL VALUES

TYPE	Depth of Immersion h (mm)	mm			Weight kg	Power kW	Voltage V(Δ/Y)	Frequency Hz	Rated current A	Speed rpm
		a	b	c						
JD 200/345	345	194	338	552	51.5	3.0	230/400	50	10.39/6.0	2905
JD 200/565	565			772	58.0					
JD 200/785	785			992	64.5					
JD 320/345	345	194	338	552	54.5	4.0	230/400	50	13.68/7.9	2900
JD 320/565	565			772	61.0					
JD 370/345	345	218	353	567	58.5	5.5	230/400	50	17.15/9.9	2900
JD 370/565	565			787	65.0					
JD 370/345-4	345	176	303	517	42.0	1.1	230/400	50	4.85/2.8	1440
JD 370/565-4	565			737	48.5					
JD 370/785-4	785			957	55					

* The performance curves are based on 1 mm²/s (cSt) kinematic viscosity values and 997 kg/m³ density
 ** Curve tolerance according to ISO 9906:2012 Grade 3B.

Performance Curve

