

JF PUMP



Applications:

- Cutting, turning, milling, boring, grinding and similar applications of the machine tools,
- Filtration systems,
- Treatment systems,
- Cooling systems,
- Circulation systems. JF Pumps are used for pumping of cutting / cooling fluids.

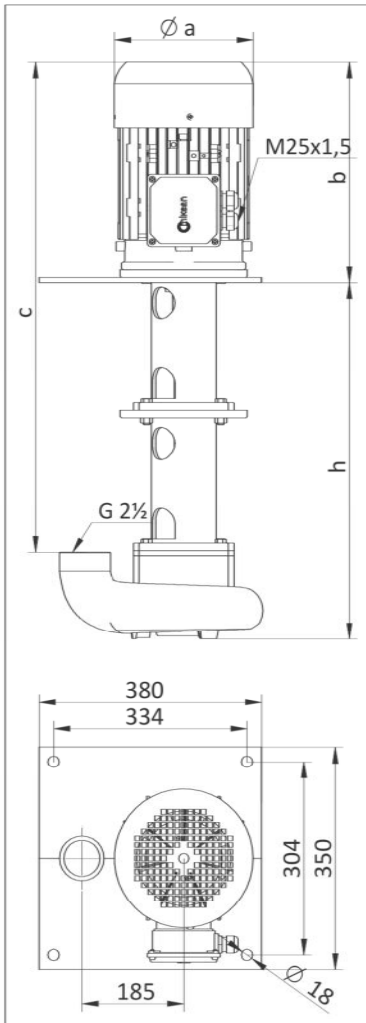
Fluid Specifications:

- Coolants,
- Cutting oils,
- Grinding oils,
- Water,
- Chip contains liquids (max. 15mm)
- Fluid temperature 0...80 °C
- Kinematic viscosity 1...90 mm²/s

Materials:

Pump body	: Cast iron - DIN GG 25
Volute	: Cast iron - DIN GG 25
Impeller	: Cast iron - DIN GG 25
Pump shaft	: Engineering steel - AISI 1040 (DIN C35)
Electric motor	: 3 phase induction motor IE3 - 2 pole, Protection degree IP 55

* Please contact us for different immersion depth.



DIMENSIONS & NOMINAL VALUES

TYPE	Depth of Immersion h (mm)	a			Weight kg	Power kW	Voltage V(Δ/Y)	Frequency Hz	Rated current A	Speed rpm
		b	c	mm						
JF 420/310	310	258	438	610	84.5	7.5	400Δ	50	14.0	2930
JF 420/530	530			830	91					
JF 420/750	750			1050	97.5					

* The performance curves are based on 1 mm²/s (cSt) kinematic viscosity values and 997 kg/m³ density
 ** Curve tolerance according to ISO 9906:2012 Grade 3B.

Performance Curve

